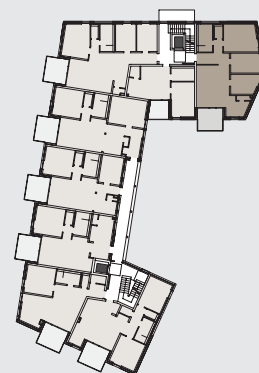
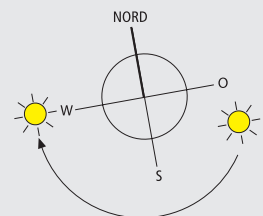
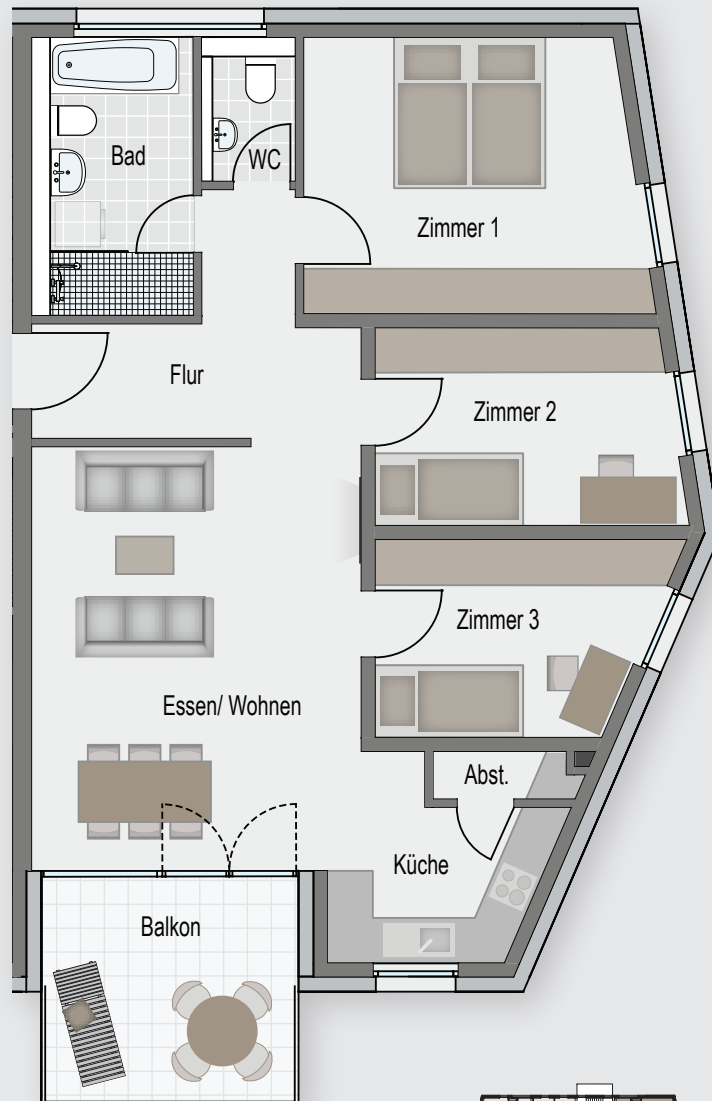


Geislingen | Brunnenstr. 23

2. Obergeschoss Wohnung Nr. 5



**4-Zimmer-Wohnung**  
m 1:100

Essen/Wohnen	23,67 m <sup>2</sup>
Küche	6,61 m <sup>2</sup>
Zimmer 1	15,89 m <sup>2</sup>
Zimmer 2	10,20 m <sup>2</sup>
Zimmer 3	9,20 m <sup>2</sup>
Bad	6,97 m <sup>2</sup>
WC	1,82 m <sup>2</sup>
Flur	8,92 m <sup>2</sup>
Abst.	1,16 m <sup>2</sup>
Terrasse (9,94 m <sup>2</sup> /2)	4,97 m <sup>2</sup>
<b>Gesamtwohnfläche</b>	<b>89,41 m<sup>2</sup></b>